

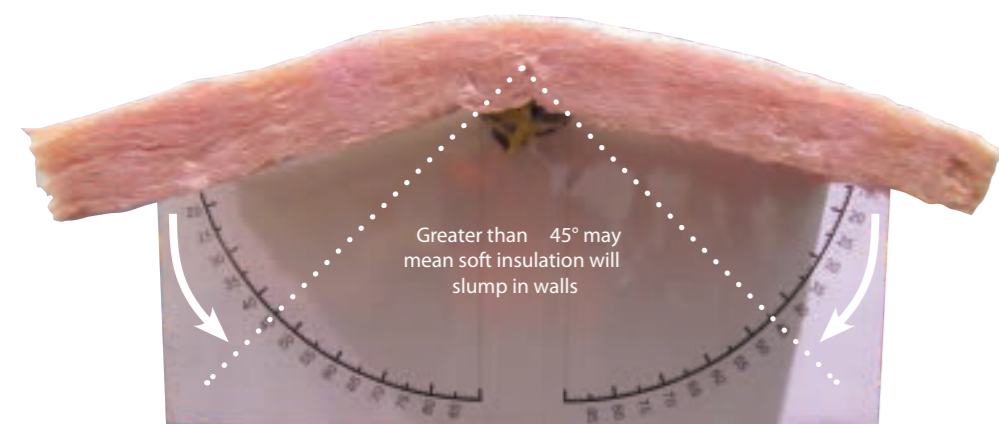


Why is Pink Batts insulation the right insulation for New Zealand?

Our unique climate, history and culture has shaped the way we design and build our homes to suit our environment. 50 years of continuous improvement has helped ensure Pink Batts insulation is the right insulation for New Zealand.

Rigid and durable wall and underfloor product design

Kiwi homes are generally constructed with timber framed walls without plywood or other rigid external sheathing. This means the insulation installed into a wall cavity must be rigid enough to stand under its own weight for at least 50 years. Pink Batts Wall insulation is designed to achieve this rigidity. Many imported products are designed for different building methods so they are softer and do not have the rigidity required. Pink Batts SnugFloor Underfloor insulation is even more rigid to ensure it doesn't sag.



The photo above shows a standard length piece of Pink Batts Classic R2.2 Wall undergoing our in house rigidity test.

High performance insulation designed for New Zealand conditions

To ensure optimum thermal performance we have developed unique products to suit our vast range of New Zealand home designs. These include Pink Batts Skillion Roof, Pink Batts 140mm Wall and Pink Batts Steel Framed Wall insulation.

Invest in peace of mind with Pink Batts - a piece of New Zealand.

Product Selection

Selecting the right product with Pink Batts insulation is simple:

Step 1 - Select the right insulation

WHAT TO CONSIDER WHEN SELECTING THE RIGHT INSULATION

Comfort/ Cost Savings/ Healthy Living
Look for a comprehensive range of insulation with higher R-values, and products designed specifically to provide optimum thermal performance in different constructions.

Sustainability
ENVIRONMENTAL
Ensure any environmental claims are backed up with independent accreditation and compare them using the results of an LCA.

NEW ZEALAND MADE
A New Zealand made insulation not only supports local industry and community it also ensures the environmental benefits of using recycled glass are retained locally.

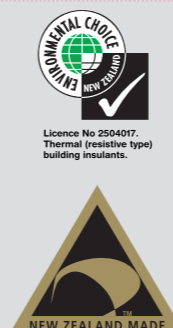
Product Safety
NON-COMBUSTIBLE
Ensure the insulation you select is non-combustible and will not easily catch fire or melt in the event of a fire.

SAFETY
Most reputable manufacturers of glass wool insulation use a safe bio-soluble formulation that means if any glass wool fibres are inhaled, they will dissolve and be rapidly cleared from the body.

INDOOR AIR QUALITY
Indoor Air Quality (IAQ) has a great effect on health. Ensure the product you use has an independent IAQ certification. This means only minimal levels of formaldehyde and other VOCs are present and the products are safe to use in your home.

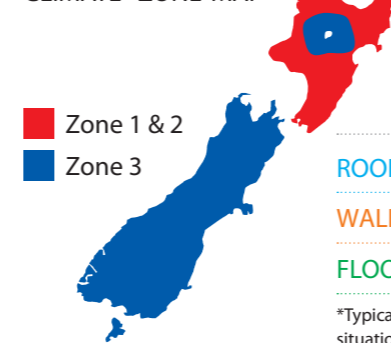
Assurance
PROVEN PRODUCTS
Look for proven products that have stood the test of time in New Zealand conditions (over 50 years) and are also independently appraised. Ensure Wall insulation products are rigid enough to prevent slumping over time.

PINK BATTS INSULATION



Step 2 - Optimise performance: Select the right Pink Batts product for your climate zone.

CLIMATE ZONE MAP



APPLICATION TABLE

	ZONE 1 & 2		ZONE 3	
	THE MINIMUM* PINK BATTS CLASSIC	THE BEST PINK BATTS ULTRA	THE MINIMUM* PINK BATTS CLASSIC	THE BEST PINK BATTS ULTRA
ROOF	R3.2 Ceiling	R4.0 Ceiling	R3.6 Ceiling	R5.0 Ceiling
WALL	R2.2 Wall	R2.6 Wall	R2.4 Wall	R2.8 Wall
FLOOR	R1.6 SnugFloor	R2.6 SnugFloor	R1.6 SnugFloor	R2.6 SnugFloor

*Typical R-value required to meet New Zealand Building Code (NZBC) clause H1 and may not comply with NZBC in all situations.

This brochure is a general guide only and is not intended to be comprehensive. A product specifier and/or installer should ascertain the suitability of any Tasman Insulation New Zealand Limited ("Tasman") product for the particular end-use intended, the particular situation, and when used in conjunction with other products. The liability of Tasman and its employees and agents for any errors or omissions in this brochure or otherwise in relation to any product is excluded to the fullest extent permitted by law, and in any event Tasman's liability to any purchaser or end user of the product shall not exceed the price of the product. All claims made in this brochure are subject to any variation caused by normal manufacturing processes and tolerances. Tasman reserves the right to, without prior notice withdraw, suspend or amend this brochure; and change product specifications. Except where the product is acquired for the purposes of a business, any rights a consumer may have under the Consumer Guarantees Act 1992 are unaffected by these terms. The colour PINK and Pink are registered trade marks of Owens Corning and used under license by Tasman Insulation. Batts is the registered trade mark of Tasman Insulation. Refer to www.pinkbatts.co.nz or contact Tasman for further information.

NOV 13 3051 Rev B





ANOTHER GOOD CALL

Pink[®] Batts[®] insulation isn't just insulation, it is a piece of New Zealand history, keeping Kiwis warm for over 50 years.

When you select Pink[®] Batts[®] insulation for your home, you are investing in over 50 years of proven performance in New Zealand conditions. Our local expertise means our products are specifically designed for how Kiwis build their homes.

ROOFING & PROFILES (FIJI) LTD

COMFORT COST SAVINGS SUSTAINABILITY PRODUCT SAFETY HEALTHY LIVING ASSURANCE

50 years of New Zealand insulation history

We have been around for over 50 years, but that hasn't stopped us moving with the times. We've continually been making improvements to our products and processes to give you 'more than comfort'. The timeline below shows the milestones in New Zealand's insulation history. It also highlights some of the steps we have taken to reduce our impact on the environment since we started manufacturing in 1961.



Our plant in Christchurch begins making Pink® Batts® insulation.

1971

1960

1961

1970

1980

1990

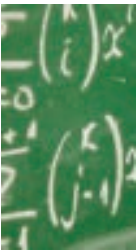
1978

Insulation becomes mandatory in new New Zealand homes (Typically 75mm thick).



1ST GENERATION OF PINK® BATTS® INSULATION

The Auckland plant opened on June 9, 1961 by the Deputy Prime Minister Hon J. R Marshall. State of the art Owens Corning insulation technology is used to produce glass wool insulation in New Zealand for the very first time.



2ND G PINK® B Scientific impro to produce a ne



**GENERATION OF
PINK® BATT® INSULATION**
Improvement to our technology
new lower itch formulation.

1991



Licence No 2504017.
Thermal (resistive type)
building insulants.

Environmental Choice
certification for the
higher R-value Pink®
Batts® Ultra® range.

2004



1 July 2009 Warm Up
New Zealand: Heat
Smart programme
begins. Providing
insulation and heating
grants to help reduce
illness caused by cold
damp living conditions.

2009



Our products meet the
independent Finnish
RTS M1 certification
for low emissions.

2013

2000

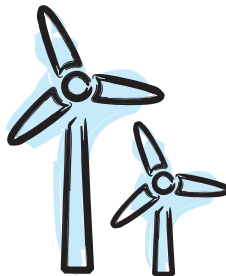


Pink® Batts® insulation is
certified as a safe Bio-soluble
formulation.

2008

SWITCH TO CLEANER ENERGY

In Auckland we replaced our
old gas fired furnace with a new
more energy efficient
electric melter. This \$7 million
dollar investment means we
now draw from the New Zealand
electricity grid, with its higher
proportion of renewable energy,
instead of using a fossil fuel.



2012

CLEANER AIR

Installation of a \$4m highly efficient emissions
control device known as a Wet Electrostatic
Precipitator at our main production plant.
Reducing emissions from the stack by over 85%.



MORE RECYCLED GLASS CONTENT

From the beginning of 2012 our Auckland plant
became one of the first plants in the world to
consistently make insulation using 83% recycled
glass content.



ROOFING & PROFILES LIMITED

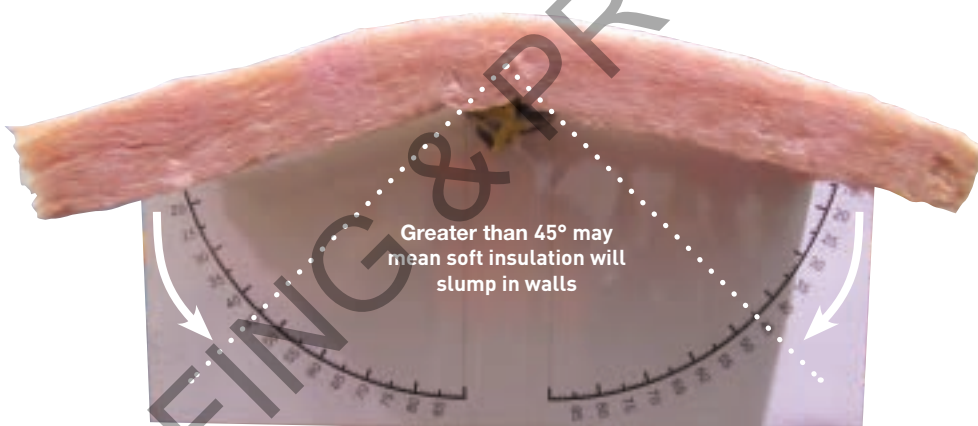


Why is Pink® Batts® insulation the right insulation for New Zealand?

Our unique climate, history and culture has shaped the way we design and build our homes to suit our environment. 50 years of continuous improvement has helped ensure Pink® Batts® insulation is the right insulation for New Zealand.

Rigid and durable wall and underfloor product design

Kiwi homes are generally constructed with timber framed walls without plywood or other rigid external sheathing. This means the insulation installed into a wall cavity must be rigid enough to stand under its own weight for at least 50 years. Pink® Batts® Wall insulation is designed to achieve this rigidity. Many imported products are designed for different building methods so they are softer and do not have the rigidity required. Pink® Batts® SnugFloor® Underfloor insulation is even more rigid to ensure it doesn't sag.



The photo above shows a standard length piece of Pink® Batts® Classic R2.2 Wall undergoing our in house rigidity test.

High performance insulation designed for New Zealand conditions

To ensure optimum thermal performance we have developed unique products to suit our vast range of New Zealand home designs. These include Pink® Batts® Skillion Roof, Pink® Batts® 140mm Wall and Pink® Batts® Steel Framed Wall insulation.

Invest in peace of mind with Pink® Batts® - a piece of New Zealand.

Product Selection

Selecting the right product with Pink® Batts® insulation is simple:

Step 1 - Select the right insulation

WHAT TO CONSIDER WHEN SELECTING THE RIGHT INSULATION

**Comfort/
Cost Savings/
Healthy Living** Look for a comprehensive range of insulation with higher R-values, and products designed specifically to provide optimum thermal performance in different constructions.

Sustainability **ENVIRONMENTAL**
Ensure any environmental claims are backed up with independent accreditation and compare them using the results of an LCA.

NEW ZEALAND MADE

A New Zealand made insulation not only supports local industry and community it also ensures the environmental benefits of using recycled glass are retained locally.

Product Safety **NON-COMBUSTIBLE**
Ensure the insulation you select is non-combustible and will not easily catch fire or melt in the event of a fire.

SAFETY

Most reputable manufacturers of glass wool insulation use a safe bio-soluble formulation that means if any glass wool fibres are inhaled, they will dissolve and be rapidly cleared from the body.

INDOOR AIR QUALITY

Indoor Air Quality (IAQ) has a great effect on health. Ensure the product you use has an independent IAQ certification. This means only minimal levels of formaldehyde and other VOCs are present and the products are safe to use in your home.

Assurance **PROVEN PRODUCTS**
Look for proven products that have stood the test of time in New Zealand conditions (over 50 years) and are also independently appraised. Ensure Wall insulation products are rigid enough to prevent slumping over time.

PINK® BATTS® INSULATION



Licence No.2504017.
Thermal (resistive type)
building insulants.



Step 2 - Optimise performance: Select the right Pink® Batts® product for your climate zone.

CLIMATE ZONE MAP

Zone 1 & 2
 Zone 3

APPLICATION TABLE

	ZONE 1 & 2		ZONE 3	
	THE MINIMUM* PINK® BATTS® CLASSIC	THE BEST PINK® BATTS® ULTRA®	THE MINIMUM* PINK® BATTS® CLASSIC	THE BEST PINK® BATTS® ULTRA®
ROOF	R3.2 Ceiling	R4.0 Ceiling	R3.6 Ceiling	R5.0 Ceiling
WALL	R2.2 Wall	R2.6 Wall	R2.4 Wall	R2.8 Wall
FLOOR	R1.6 SnugFloor®	R2.6 SnugFloor®	R1.6 SnugFloor®	R2.6 SnugFloor®

*Typical R-value required to meet New Zealand Building Code (NZBC) clause H1 and may not comply with NZBC in all situations.

This brochure is a general guide only and is not intended to be comprehensive. A product specifier and/or installer should ascertain the suitability of any Tasman Insulation New Zealand Limited ("Tasman") product for the particular end-use intended, the particular situation, and when used in conjunction with other products. The liability of Tasman and its employees and agents for any errors or omissions in this brochure or otherwise in relation to any product is excluded to the fullest extent permitted by law, and in any event Tasman's liability to any purchaser or end user of the product shall not exceed the price of the product. All claims made in this brochure are subject to any variation caused by normal manufacturing processes and tolerances. Tasman reserves the right to, without prior notice withdraw, suspend or amend this brochure; and change product specifications. Except where the product is acquired for the purposes of a business, any rights a consumer may have under the Consumer Guarantees Act 1992 are unaffected by these terms. The colour PINK and Pink® are registered trade marks of Owens Corning and used under license by Tasman Insulation. Batts® is the registered trade mark of Tasman Insulation. Refer to www.pinkbatts.co.nz or contact Tasman for further information.

NOV 13 3051 Rev B